

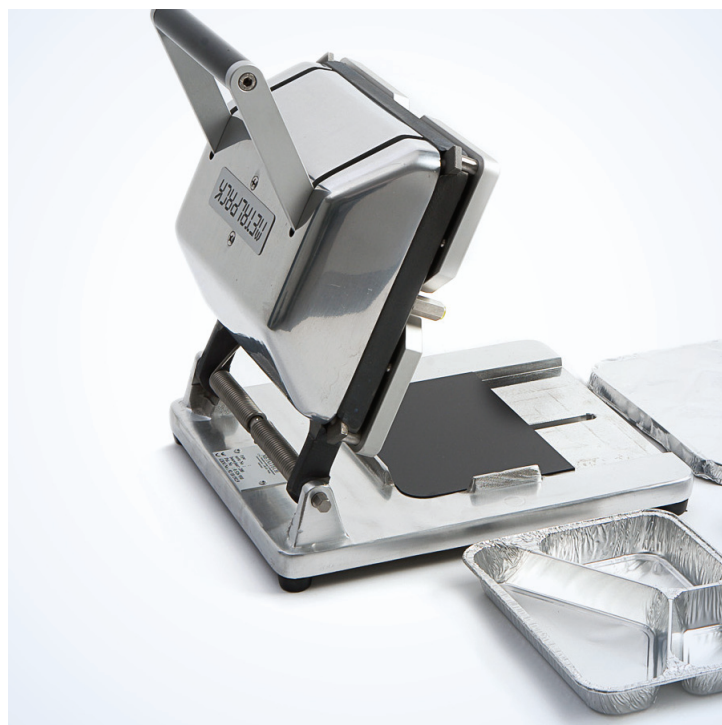
Top Sealing Machines

The hand closer Type 227* is specially designed for closure of aluminum trays. The use of a special patented mechanism ensures that the control force is increased 50 times, which results in a quick and virtually leak-proof closure.

Because of its small dimensions and low weight and due to the fact that there is no electricity needed, the machine is easily applicable in many places. Self-lubricating bearings and the use of stainless materials ensures the maintenance of the machine to a minimum.

* Type 160 specific for smaller trays

* Patented



MetalPack
Hand Closer Type 227

**MTL
PCK**



MetalPack
Top seal machines



MetalPack

Hand Closer Type 227

Application

Single piece to medium series.

Number of closures

Depending on the skills of the user, faster than comparable hand closing machines.

Materials

Top plate of hard anodized aluminum impregnated with PTFE.

This makes the machine wear-resistant, corrosion resistant and maintenance free. The other components are made of aluminum, plastic, stainless steel or nickel-plated steel.

Maintenance

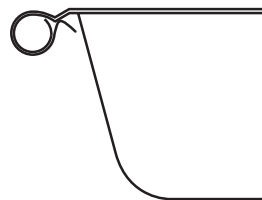
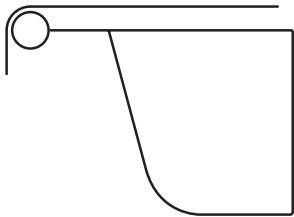
It is recommended to clean the machine by hand.

Operating

The preformed lid will be tightly curved around the aluminum tray. At the same time a groove is pressed in the lid. This creates an optimal closure.

Before closure:

After closure:



Please visit our website www.metalpack.nl for other models or consult your dealer.

Technical specifications

Dimensions (bxdxh): opened, 30x35x40 cm
 closed, 30x39x15 cm
Shipping dimensions: 40x30x15 cm
Shipping weight: 11 Kg

Dealer data: